



**U.S. ARMY CORPS OF ENGINEERS  
REGULATORY PROGRAM  
APPROVED JURISDICTIONAL DETERMINATION FORM (INTERIM)  
NAVIGABLE WATERS PROTECTION RULE**

**I. ADMINISTRATIVE INFORMATION**

Completion Date of Approved Jurisdictional Determination (AJD): 1/5/2021  
 ORM Number: MVM-2020-264  
 Associated JDs: MVM-2020-264  
 Review Area Location<sup>1</sup>: State/Territory: Tennessee City: Ridgely County/Parish/Borough: Lake  
 Center Coordinates of Review Area: Latitude 36.298885° Longitude -89.476030°

**II. FINDINGS**

**A. Summary:** Check all that apply. At least one box from the following list MUST be selected. Complete the corresponding sections/tables and summarize data sources.

- The review area is comprised entirely of dry land (i.e., there are no waters or water features, including wetlands, of any kind in the entire review area). Rationale: N/A or describe rationale.
- There are “navigable waters of the United States” within Rivers and Harbors Act jurisdiction within the review area (complete table in Section II.B).
- There are “waters of the United States” within Clean Water Act jurisdiction within the review area (complete appropriate tables in Section II.C).
- There are waters or water features excluded from Clean Water Act jurisdiction within the review area (complete table in Section II.D).

**B. Rivers and Harbors Act of 1899 Section 10 (§ 10)<sup>2</sup>**

§ 10 Name	§ 10 Size		§ 10 Criteria	Rationale for § 10 Determination
N/A.	N/A.	N/A	N/A.	N/A.

**C. Clean Water Act Section 404**

Territorial Seas and Traditional Navigable Waters ((a)(1) waters): <sup>3</sup>				
(a)(1) Name	(a)(1) Size		(a)(1) Criteria	Rationale for (a)(1) Determination
N/A.	N/A.	N/A.	N/A.	N/A.

Tributaries ((a)(2) waters):				
(a)(2) Name	(a)(2) Size		(a)(2) Criteria	Rationale for (a)(2) Determination
S-D-2 (Blue Bank Bayou)	3505.05	linear feet	(a)(2) Perennial tributary contributes surface water flow directly or indirectly to an (a)(1) water in a typical year.	Blue Bank Bayou is a well-known stream that is mapped as a blue line on topographic maps.
S-E-1	110.96	linear feet	(a)(2) Perennial tributary contributes	This stream contributes flow directly into an (a)(1) water.

<sup>1</sup> Map(s)/figure(s) are attached to the AJD provided to the requestor.

<sup>2</sup> If the navigable water is not subject to the ebb and flow of the tide or included on the District’s list of Rivers and Harbors Act Section 10 navigable waters list, do NOT use this document to make the determination. The District must continue to follow the procedure outlined in 33 CFR part 329.14 to make a Rivers and Harbors Act Section 10 navigability determination.

<sup>3</sup> A stand-alone TNW determination is completed independently of a request for an AJD. A stand-alone TNW determination is conducted for a specific segment of river or stream or other type of waterbody, such as a lake, where upstream or downstream limits or lake borders are established. A stand-alone TNW determination should be completed following applicable guidance and should NOT be documented on the AJD Form.



**U.S. ARMY CORPS OF ENGINEERS  
REGULATORY PROGRAM  
APPROVED JURISDICTIONAL DETERMINATION FORM (INTERIM)  
NAVIGABLE WATERS PROTECTION RULE**

Tributaries ((a)(2) waters):				
(a)(2) Name	(a)(2) Size		(a)(2) Criteria	Rationale for (a)(2) Determination
			surface water flow directly or indirectly to an (a)(1) water in a typical year.	
S-E-3	109.19	linear feet	(a)(2) Perennial tributary contributes surface water flow directly or indirectly to an (a)(1) water in a typical year.	This stream contributes flow directly into an (a)(1) water.

Lakes and ponds, and impoundments of jurisdictional waters ((a)(3) waters):				
(a)(3) Name	(a)(3) Size		(a)(3) Criteria	Rationale for (a)(3) Determination
N/A.	N/A.	N/A.	N/A.	N/A.

Adjacent wetlands ((a)(4) waters):				
(a)(4) Name	(a)(4) Size		(a)(4) Criteria	Rationale for (a)(4) Determination
Wetland-D-1	1.52	acre(s)	(a)(4) Wetland abuts an (a)(1)-(a)(3) water.	This wetland is adjacent to Blue Bank Bayou which flows into the Mississippi River.
Wetland-E-3	0.18	acre(s)	(a)(4) Wetland abuts an (a)(1)-(a)(3) water.	This wetland is adjacent to Blue Bank Bayou which flows into the Mississippi River.
Wetland-E-4	0.05	acre(s)	(a)(4) Wetland abuts an (a)(1)-(a)(3) water.	This wetland is adjacent to Blue Bank Bayou which flows into the Mississippi River.

**D. Excluded Waters or Features**

Excluded waters ((b)(1) – (b)(12)): <sup>4</sup>				
Exclusion Name	Exclusion Size		Exclusion <sup>5</sup>	Rationale for Exclusion Determination
Wetland-B-1	0.44	acre(s)	(b)(1) Non-adjacent wetland.	This wetland does not abut an (a)(1) – (a)(3) water.
Wetland-C-1	0.02	acre(s)	(b)(1) Non-adjacent wetland.	This wetland does not abut an (a)(1) – (a)(3) water.
Wetland-C-2	3.37	acre(s)	(b)(1) Non-adjacent wetland.	This wetland does not abut an (a)(1) – (a)(3) water.
Wetland-C-3	0.13	acre(s)	(b)(1) Non-adjacent wetland.	This wetland does not abut an (a)(1) – (a)(3) water.
Wetland-C-4	11.91	acre(s)	(b)(1) Non-adjacent wetland.	This wetland does not abut an (a)(1) – (a)(3) water.

<sup>4</sup> Some excluded waters, such as (b)(2) and (b)(4), may not be specifically identified on the AJD form unless a requestor specifically asks a Corps district to do so. Corps districts may, in case-by-case instances, choose to identify some or all of these waters within the review area.

<sup>5</sup> Because of the broad nature of the (b)(1) exclusion and in an effort to collect data on specific types of waters that would be covered by the (b)(1) exclusion, four sub-categories of (b)(1) exclusions were administratively created for the purposes of the AJD Form. These four sub-categories are not new exclusions, but are simply administrative distinctions and remain (b)(1) exclusions as defined by the NWPR.



**U.S. ARMY CORPS OF ENGINEERS  
REGULATORY PROGRAM  
APPROVED JURISDICTIONAL DETERMINATION FORM (INTERIM)  
NAVIGABLE WATERS PROTECTION RULE**

Excluded waters ((b)(1) – (b)(12)): <sup>4</sup>				
Exclusion Name	Exclusion Size		Exclusion <sup>5</sup>	Rationale for Exclusion Determination
Wetland-C-5	0.21	acre(s)	(b)(1) Non-adjacent wetland.	This wetland does not abut an (a)(1) – (a)(3) water.
Wetland-C-6	0.19	acre(s)	(b)(1) Non-adjacent wetland.	This wetland does not abut an (a)(1) – (a)(3) water.
Wetland-C-7	1.50	acre(s)	(b)(1) Non-adjacent wetland.	This wetland does not abut an (a)(1) – (a)(3) water.
Wetland-C-8	0.58	acre(s)	(b)(1) Non-adjacent wetland.	This wetland does not abut an (a)(1) – (a)(3) water.
Wetland-C-9	0.10	acre(s)	(b)(1) Non-adjacent wetland.	This wetland does not abut an (a)(1) – (a)(3) water.
Wetland-C-10	0.04	acre(s)	(b)(1) Non-adjacent wetland.	This wetland does not abut an (a)(1) – (a)(3) water.
Wetland-C-11	0.07	acre(s)	(b)(1) Non-adjacent wetland.	This wetland does not abut an (a)(1) – (a)(3) water.
Wetland-C-12	0.03	acre(s)	(b)(1) Non-adjacent wetland.	This wetland does not abut an (a)(1) – (a)(3) water.
Wetland-D-2	23.38	acre(s)	(b)(1) Non-adjacent wetland.	This wetland does not abut an (a)(1) – (a)(3) water.
Wetland-E-1	0.30	acre(s)	(b)(1) Non-adjacent wetland.	This wetland does not abut an (a)(1) – (a)(3) water.
Wetland-E-2	0.25	acre(s)	(b)(1) Non-adjacent wetland.	This wetland does not abut an (a)(1) – (a)(3) water.
Wetland-E-5	0.28	acre(s)	(b)(1) Non-adjacent wetland.	This wetland does not abut an (a)(1) – (a)(3) water.
Wetland-E-6	0.01	acre(s)	(b)(1) Non-adjacent wetland.	This wetland does not abut an (a)(1) – (a)(3) water.
Stream S-A-1	2204.9 1	linear feet	(b)(3) Ephemeral feature, including an ephemeral stream, swale, gully, rill, or pool.	This stream only flows in direct response to precipitation.
Stream S-A-2	2326.1 7	linear feet	(b)(3) Ephemeral feature, including an ephemeral stream, swale, gully, rill, or pool.	This stream only flows in direct response to precipitation.
Stream S-A-3	4249.4 7	linear feet	(b)(3) Ephemeral feature, including an ephemeral stream, swale, gully, rill, or pool.	This stream only flows in direct response to precipitation.
Stream S-A-4	3108.1 4	linear feet	(b)(3) Ephemeral feature, including an ephemeral stream, swale, gully, rill, or pool.	This stream only flows in direct response to precipitation.



**U.S. ARMY CORPS OF ENGINEERS  
REGULATORY PROGRAM  
APPROVED JURISDICTIONAL DETERMINATION FORM (INTERIM)  
NAVIGABLE WATERS PROTECTION RULE**

Excluded waters ((b)(1) – (b)(12)): <sup>4</sup>				
Exclusion Name	Exclusion Size	Exclusion <sup>5</sup>	Rationale for Exclusion Determination	
Stream S-A-5	1387.1 0	linear feet	(b)(3) Ephemeral feature, including an ephemeral stream, swale, gully, rill, or pool.	This stream only flows in direct response to precipitation.
Stream S-B-1	4425.7 8	linear feet	(b)(3) Ephemeral feature, including an ephemeral stream, swale, gully, rill, or pool.	This stream only flows in direct response to precipitation.
Stream S-B-2	2034.4 7	linear feet	(b)(3) Ephemeral feature, including an ephemeral stream, swale, gully, rill, or pool.	This stream only flows in direct response to precipitation.
Stream S-B-3	682.78	linear feet	(b)(3) Ephemeral feature, including an ephemeral stream, swale, gully, rill, or pool.	This stream only flows in direct response to precipitation.
Stream S-C-1	2057.5 2	linear feet	(b)(3) Ephemeral feature, including an ephemeral stream, swale, gully, rill, or pool.	This stream only flows in direct response to precipitation.
Stream S-C-2	498.33	linear feet	(b)(3) Ephemeral feature, including an ephemeral stream, swale, gully, rill, or pool.	This stream only flows in direct response to precipitation.
Stream S-C-3	1026.2	linear feet	(b)(3) Ephemeral feature, including an ephemeral stream, swale, gully, rill, or pool.	This stream only flows in direct response to precipitation.
Stream S-C-4	761.39	linear feet	(b)(3) Ephemeral feature, including an ephemeral stream, swale, gully, rill, or pool.	This stream only flows in direct response to precipitation.
Stream S-C-5	1106.0 7	linear feet	(b)(3) Ephemeral feature, including an ephemeral stream, swale, gully, rill, or pool.	This stream only flows in direct response to precipitation.
Stream S-C-6	670.30	linear feet	(b)(3) Ephemeral feature, including	This stream only flows in direct response to precipitation.



**U.S. ARMY CORPS OF ENGINEERS  
REGULATORY PROGRAM  
APPROVED JURISDICTIONAL DETERMINATION FORM (INTERIM)  
NAVIGABLE WATERS PROTECTION RULE**

Excluded waters ((b)(1) – (b)(12)): <sup>4</sup>				
Exclusion Name	Exclusion Size		Exclusion <sup>5</sup>	Rationale for Exclusion Determination
			an ephemeral stream, swale, gully, rill, or pool.	
Stream S-C-7	701.54	linear feet	(b)(3) Ephemeral feature, including an ephemeral stream, swale, gully, rill, or pool.	This stream only flows in direct response to precipitation.
Stream S-C-8	1216.49	linear feet	(b)(3) Ephemeral feature, including an ephemeral stream, swale, gully, rill, or pool.	This stream only flows in direct response to precipitation.
Stream S-C-9	116.01	linear feet	(b)(3) Ephemeral feature, including an ephemeral stream, swale, gully, rill, or pool.	This stream only flows in direct response to precipitation.
Stream S-D-1	649.23	linear feet	(b)(3) Ephemeral feature, including an ephemeral stream, swale, gully, rill, or pool.	This stream only flows in direct response to precipitation.
Stream S-D-3	4621.98	linear feet	(b)(3) Ephemeral feature, including an ephemeral stream, swale, gully, rill, or pool.	This stream only flows in direct response to precipitation.
Stream S-D-4	1483.61	linear feet	(b)(3) Ephemeral feature, including an ephemeral stream, swale, gully, rill, or pool.	This stream only flows in direct response to precipitation.
Stream S-D-5	3185.35	linear feet	(b)(3) Ephemeral feature, including an ephemeral stream, swale, gully, rill, or pool.	This stream only flows in direct response to precipitation.
Stream S-D-6	1183.66	linear feet	(b)(3) Ephemeral feature, including an ephemeral stream, swale, gully, rill, or pool.	This stream only flows in direct response to precipitation.
Stream S-D-7	1810.63	linear feet	(b)(3) Ephemeral feature, including an ephemeral	This stream only flows in direct response to precipitation.



**U.S. ARMY CORPS OF ENGINEERS  
REGULATORY PROGRAM  
APPROVED JURISDICTIONAL DETERMINATION FORM (INTERIM)  
NAVIGABLE WATERS PROTECTION RULE**

Excluded waters ((b)(1) – (b)(12)): <sup>4</sup>				
Exclusion Name	Exclusion Size		Exclusion <sup>5</sup>	Rationale for Exclusion Determination
			stream, swale, gully, rill, or pool.	
Stream S-D-8	1378.0 2	linear feet	(b)(3) Ephemeral feature, including an ephemeral stream, swale, gully, rill, or pool.	This stream only flows in direct response to precipitation.
Stream S-E-2	126.19	linear feet	(b)(3) Ephemeral feature, including an ephemeral stream, swale, gully, rill, or pool.	This stream only flows in direct response to precipitation.

**III. SUPPORTING INFORMATION**

**A. Select/enter all resources** that were used to aid in this determination and attach data/maps to this document and/or references/citations in the administrative record, as appropriate.

- Information submitted by, or on behalf of, the applicant/consultant: [Sam Waltman, Cardno, Inc.](#)  
This information is sufficient for purposes of this AJD.  
Rationale: [A site visit was performed by Memphis District Regulatory personnel to validate the agent’s findings.](#)
- Data sheets prepared by the Corps: [Title\(s\) and/or date\(s\).](#)
- Photographs: [Aerial and Other: Ridgely Solar Facility, Natural Resources Report, Cardno, Inc.](#)
- Corps site visit(s) conducted on: [October 2, 2020](#)
- Previous Jurisdictional Determinations (AJDs or PJDs): [ORM Number\(s\) and date\(s\).](#)
- Antecedent Precipitation Tool: [provide detailed discussion in Section III.B.](#)
- USDA NRCS Soil Survey: [Title\(s\) and/or date\(s\).](#)
- USFWS NWI maps: [Title\(s\) and/or date\(s\).](#)
- USGS topographic maps: [Title\(s\) and/or date\(s\).](#)

**Other data sources used to aid in this determination:**

Data Source (select)	Name and/or date and other relevant information
<a href="#">USGS Sources</a>	<a href="#">N/A.</a>
<a href="#">USDA Sources</a>	<a href="#">N/A.</a>
<a href="#">NOAA Sources</a>	<a href="#">N/A.</a>
<a href="#">USACE Sources</a>	<a href="#">N/A.</a>
<a href="#">State/Local/Tribal Sources</a>	<a href="#">N/A.</a>
<a href="#">Other Sources</a>	<a href="#">N/A.</a>

**B. Typical year assessment(s):** [The antecedent precipitation tool calculated the day of the site visit to be “Normal Conditions”.](#)

**C. Additional comments to support AJD:** [Please reference the attached maps and tables for the reviewed area’s boundaries, features and locations.](#)

Table 5-2 Delineated Wetlands Ridgely Properties

Wetland ID	Latitude	Longitude	Type	Acreage	Potentially Jurisdictional (USACE)	TVA Ram Category
WET-B-1	36.29936969	-89.49622882	PEM	0.44	No	1
WET-C-1	36.30465743	-89.46416312	PFO	0.02	No	1
WET-C-2	36.30160638	-89.46387351	PFO	3.37	No	2
WET-C-3	36.29770457	-89.46488503	PEM	0.13	No	2
WET-C-4	36.2966913	-89.46366472	PFO	11.91	No	2
WET-C-5	36.29720299	-89.46373537	PUB	0.21	No	-
WET-C-6	36.29638432	-89.46205866	PEM	0.19	No	1
WET-C-7	36.29424472	-89.4654706	PFO	1.50	No	2
WET-C-8	36.29345616	-89.4650397	PFO	0.58	No	2
WET-C-9	36.29337773	-89.46549164	PEM	0.10	No	1
WET-C-10	36.29389261	-89.46526275	PEM	0.04	No	1
WET-C-11	36.29209394	-89.47315356	PEM	0.07	No	1
WET-C-12	36.29343965	-89.46196966	PEM	0.03	No	1
WET-D-1	36.29972911	-89.48172331	PFO	1.52	Yes	3
WET-D-2	36.30678047	-89.48968232	PEM	23.38	No	1
<b>Total</b>				<b>43.48</b>		
<b>Total Non-jurisdictional</b>				<b>41.96</b>		
<b>Total Jurisdictional</b>				<b>1.52</b>		

Table 5-3 Delineated Wetlands TVA Transmission Line

Wetland ID	Latitude	Longitude	Type	Acreage	Jurisdictional	TVA Ram Category
WET-E-1	36.35558152	-89.46275997	PEM	0.30	No	1
WET-E-2	36.357638	-89.46262957	PEM	0.25	No	1
WET-E-3	36.36424257	-89.46237973	PEM	0.18	Yes	1
WET-E-4	36.34742589	-89.46296531	PEM	0.05	Yes	1
WET-E-5	36.34049823	-89.46206794	PEM	0.28	No	1
WET-E-6	36.35328427	-89.46266763	PUB(x)	0.01	No	-
<b>Total</b>				<b>1.08</b>		
<b>Total Non-jurisdictional</b>				<b>0.85</b>		
<b>Total Jurisdictional</b>				<b>0.23</b>		



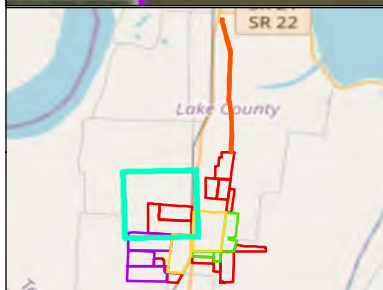
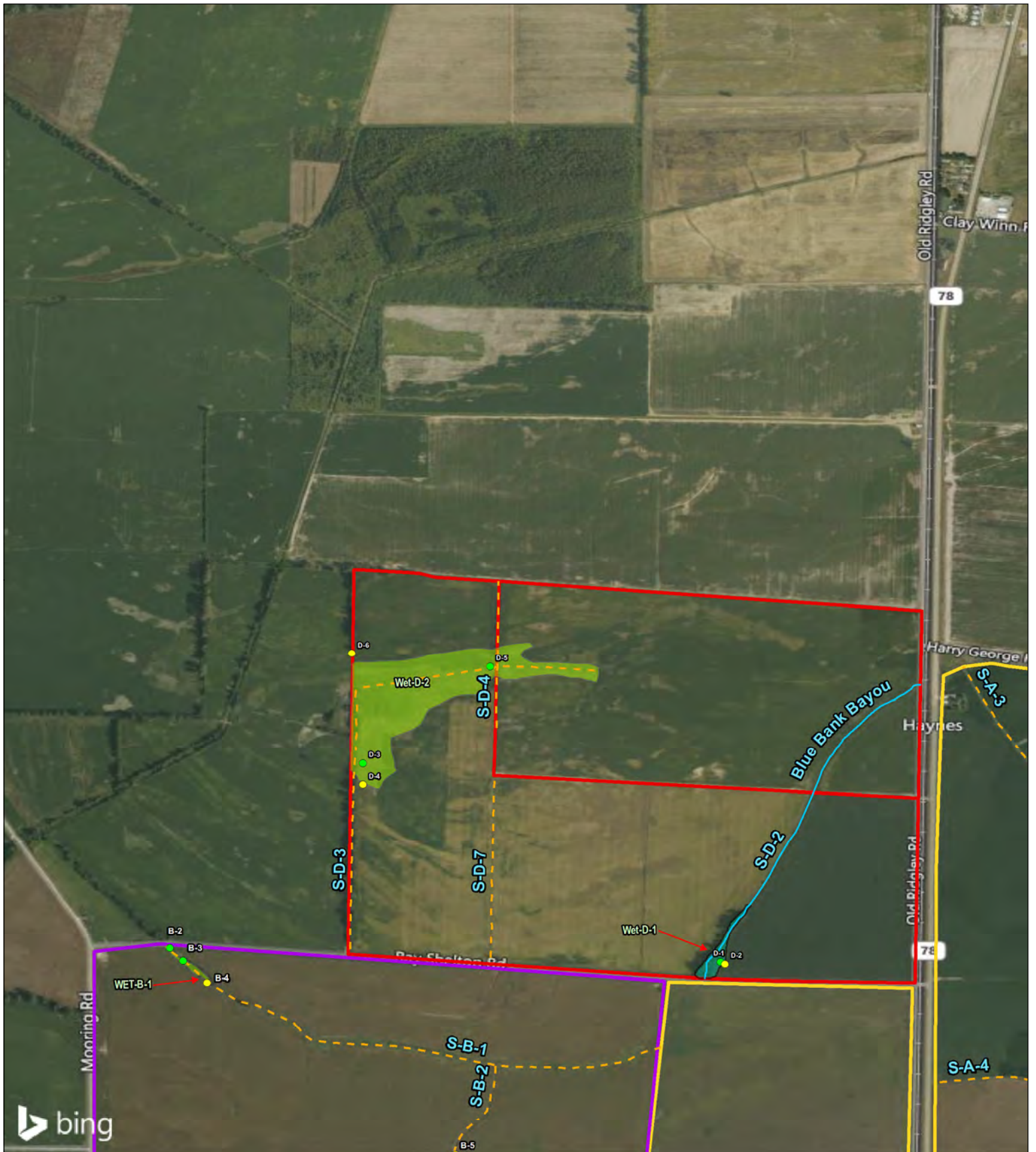
Table 5-4 Delineated Streams (Parcels)

Stream ID	Latitude	Longitude	Flow Type	Stream Length (ft)	Water Depth (In.)	Width at Bankfull (ft)	Substrate	Potentially Jurisdictional (USACE)	TVA/TDEC Hydrologic Determination
S-A-1	36.29361973	-89.48019616	Ephemeral	2204.91	0	1.5	Organic	No	WWC
S-A-2	36.29181326	-89.48036527	Ephemeral	2326.17	0	2	Organic	No	WWC
S-A-3	36.30372675	-89.47033375	Ephemeral	4249.47	0	1.5	Organic	No	WWC
S-A-4	36.29672567	-89.47082873	Ephemeral	3108.14	0	1.5	Organic	No	WWC
S-A-5	36.29493945	-89.47071408	Ephemeral	1387.10	0	1.5	Organic	No	WWC
S-B-1	36.29912288	-89.49590662	Ephemeral	4,425.78	0	3	Organic	No	WWC
S-B-2	36.2944816	-89.48784093	Ephemeral	2034.47	0	2.5	Organic	No	WWC
S-B-3	36.28329525	-89.48726944	Ephemeral	682.78	0	2	Organic	No	WWC
S-C-1	36.30552392	-89.46278916	Ephemeral	2057.52	0	5	Organic	No	WWC
S-C-2	36.30435223	-89.45985129	Ephemeral	498.33	0	3	Organic	No	WWC
S-C-3	36.30431856	-89.46239501	Ephemeral	1026.20	0	0.5	Organic	No	WWC
S-C-4	36.29214069	-89.46838184	Ephemeral	761.39	5	3	Organic	No	WWC
S-C-5	36.29276419	-89.47416859	Ephemeral	1106.07	0	0.5	Organic	No	WWC
S-C-6	36.29238675	-89.47256052	Ephemeral	670.30	0	0.5	Organic	No	WWC
S-C-7	36.29219653	-89.47593231	Ephemeral	701.54	0	0.5	Organic	No	WWC
S-C-8	36.29471877	-89.46086041	Ephemeral	1216.49	0	0.5	Organic	No	WWC
S-C-9	36.293133	-89.46147992	Ephemeral	116.01	0	0.5	Organic	No	WWC
S-D-1	36.30746981	-89.46303895	Ephemeral	649.23	2	5	Organic	No	WWC
S-D-2	36.30326065	-89.47950092	Perennial	3505.05	10	6	Organic	Yes	Stream
S-D-3	36.30507805	-89.49027135	Ephemeral	4621.98	2	3	Organic	No	WWC
S-D-4	36.3078735	-89.4877841	Ephemeral	1483.61	3	3	Organic	No	WWC
S-D-5	36.29490616	-89.4551541	Ephemeral	3185.35	0	3	Organic	No	WWC
S-D-6	36.31422041	-89.46931254	Ephemeral	1183.66	0	3	Organic	No	WWC
S-D-7	36.30194944	-89.48792695	Ephemeral	1810.63	0	3	Organic	No	WWC
S-D-8	36.28960381	-89.46360755	Ephemeral	1378.02	0	3	Organic	No	WWC
<b>Total</b>				<b>46390.19</b>					
<b>Total Non-jurisdictional</b>				<b>42,885.14</b>					
<b>Total Jurisdictional</b>				<b>3505.05</b>					

Table 5-5 Delineated Streams (TVA TLine)



Stream ID	Latitude	Longitude	Flow Type	Length within ROW (ft)	Water Depth (In.)	Top of Bank at Bankfull (ft)	Substrate	Potentially Jurisdictional (USACE)	TVA/TDEC Hydrologic Determination
S-E-1	36.36372221	-89.46239008	Perennial	110.96	12	10	Unconsolidated	Yes	Not Scored – No impacts Anticipated
S-E-2	36.36644718	-89.46297969	Ephemeral	126.19	3	4	Unconsolidated	No	
S-E-3	36.34721516	-89.4630439	Perennial	109.19	12	9	Unconsolidated	Yes	
<b>Total</b>				<b>346.34</b>					
<b>Total Non-jurisdictional</b>				<b>126.19</b>					
<b>Total Jurisdictional</b>				<b>220.15</b>					



Study A	Ephemeral Stream	PEM Wetland
Study B	Perennial Stream	PFO Wetland
Study C	Upland Data Point	PUB(x) Pond
Study D	Wetland Data Point	
Study E		
Excluded Parcels		



**Cardno**  
Shaping the Future

---

First Solar Ridgely

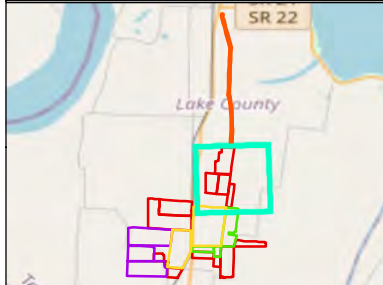
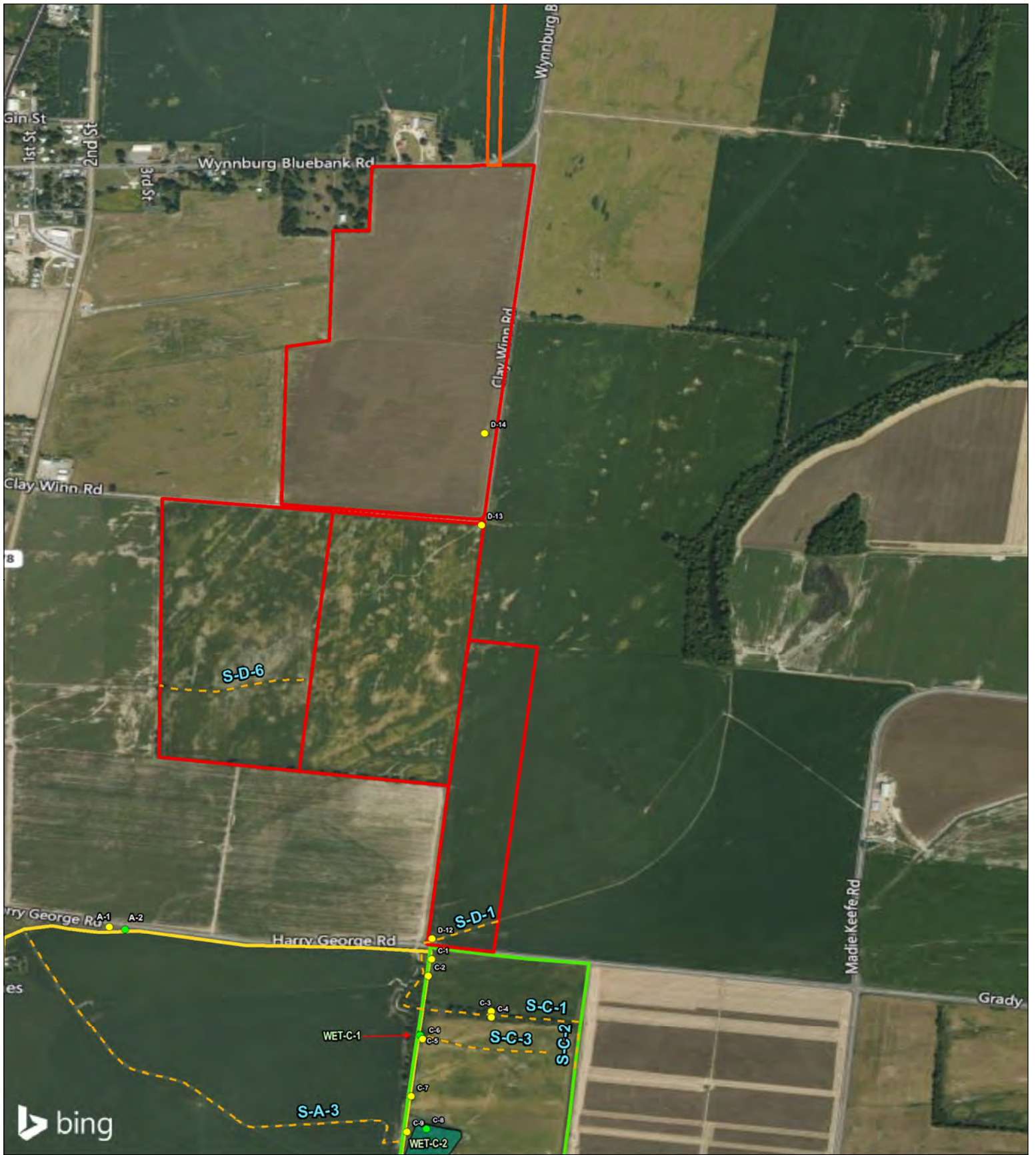
---

Project Mapping

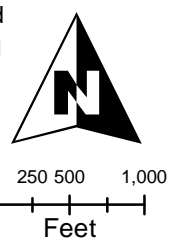
---

Date: June 2020	Project No: E318201608	Appendix No: <b>C-1</b>
--------------------	---------------------------	----------------------------





Study A	Ephemeral Stream	PEM Wetland
Study B	Perennial Stream	PFO Wetland
Study C	Upland Data Point	PUB(x) Pond
Study D	Wetland Data Point	
Study E		
Excluded Parcels		

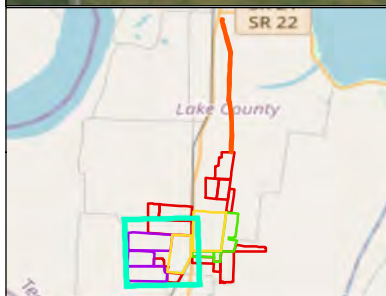
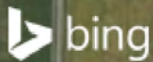
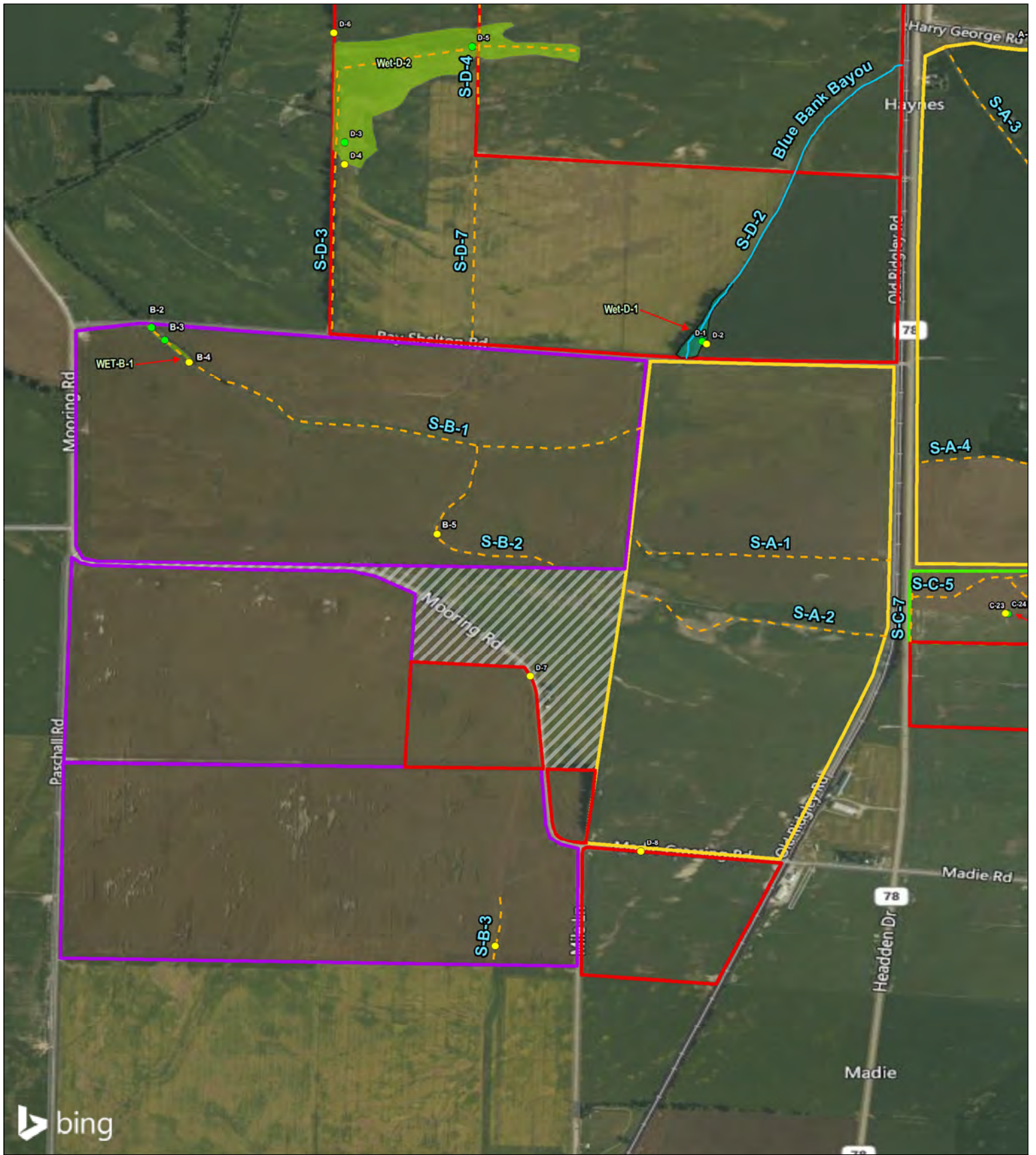


First Solar Ridgely

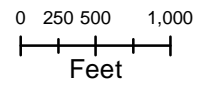
Project Mapping

Date: June 2020	Project No: E318201608	Appendix No: <b>C-2</b>
--------------------	---------------------------	----------------------------





- Study A
- Study B
- Study C
- Study D
- Study E
- Ephemeral Stream
- Perennial Stream
- Upland Data Point
- Wetland Data Point
- PEM Wetland
- PFO Wetland
- PUB(x) Pond
- Excluded Parcels

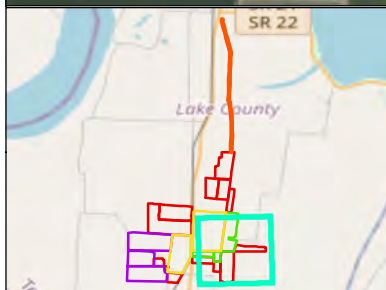
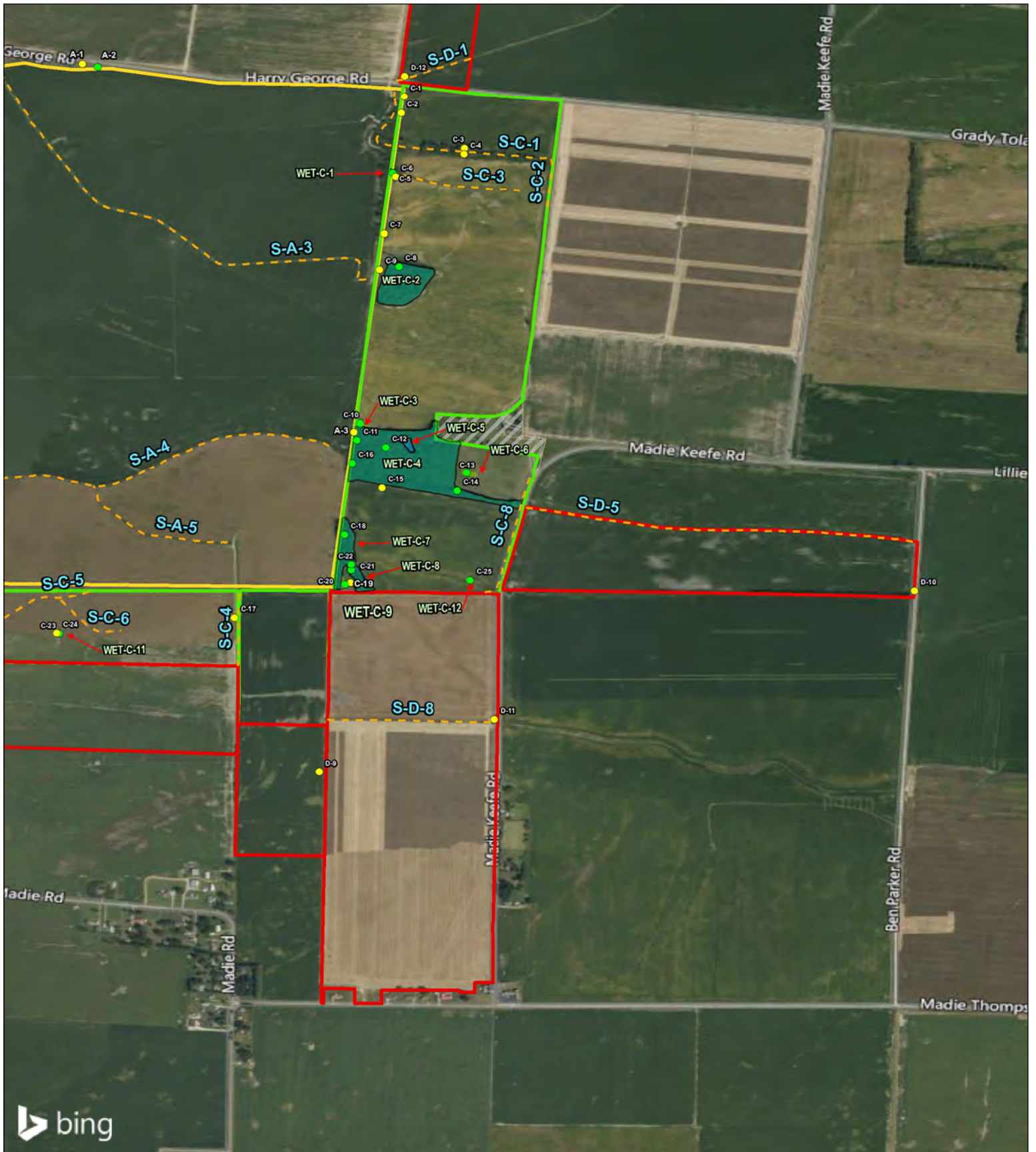


First Solar Ridgely

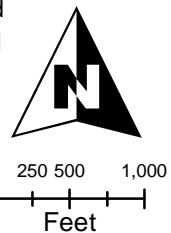
**Project Mapping**

Date: June 2020	Project No: E318201608	Appendix No: <b>C-3</b>
--------------------	---------------------------	----------------------------





- Study A
- Study B
- Study C
- Study D
- Study E
- PEM Wetland
- PFO Wetland
- PUB(x) Pond
- Upland Data Point
- Wetland Data Point
- Excluded Parcels
- Ephemeral Stream
- Perennial Stream

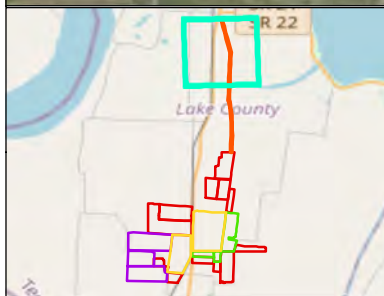
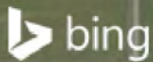


First Solar Ridgely

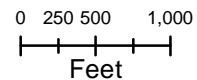
**Project Mapping**

Date: June 2020	Project No: E318201608	Appendix No: <b>C-4</b>
--------------------	---------------------------	----------------------------





- Study A
- Study B
- Study C
- Study D
- Study E
- Excluded Parcels
- Ephemeral Stream
- Perennial Stream
- PEM Wetland
- PFO Wetland
- PUB(x) Pond
- Upland Data Point
- Wetland Data Point

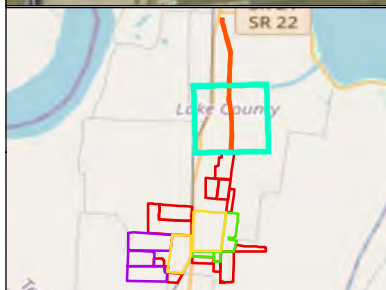
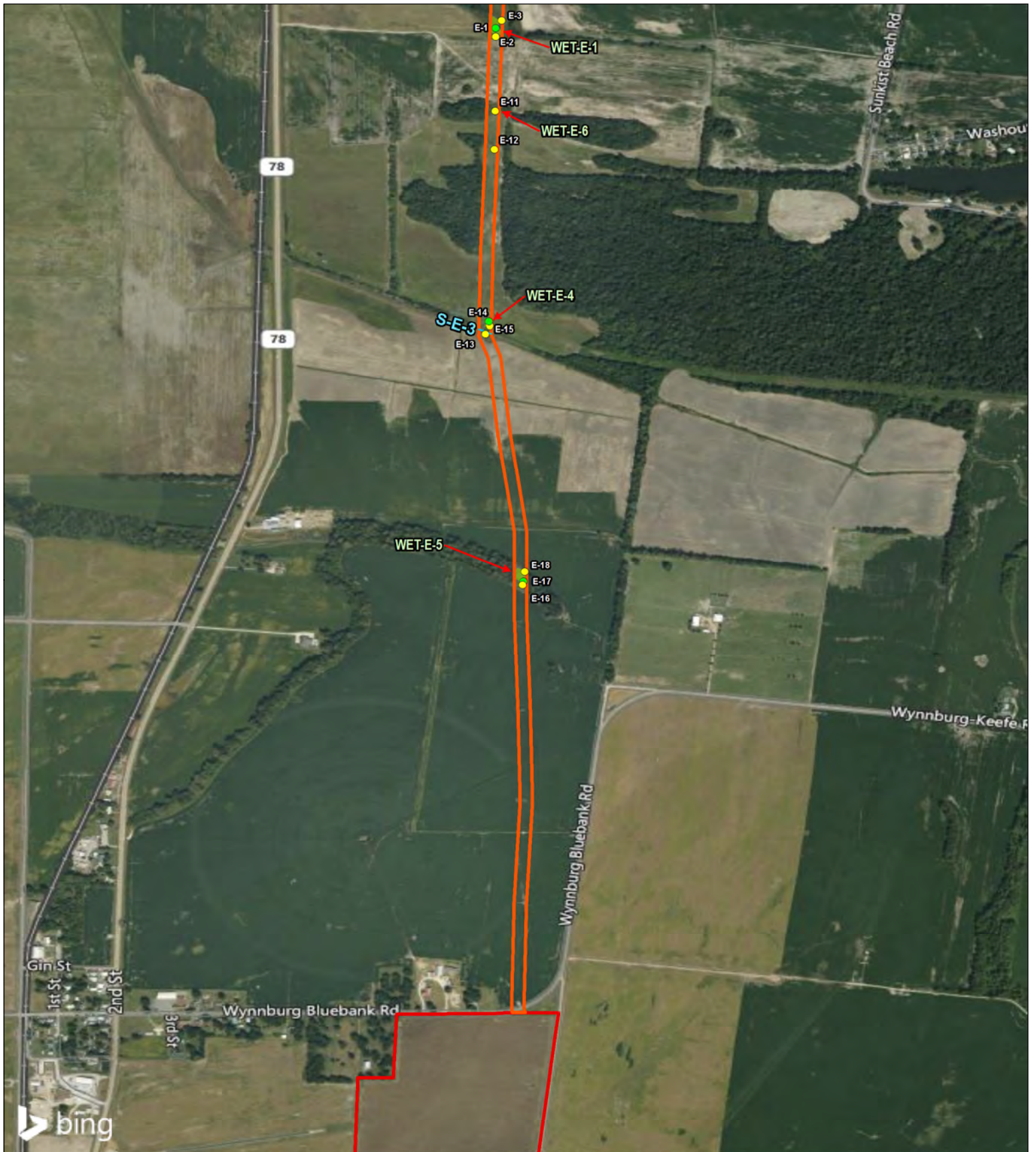


First Solar Ridgely

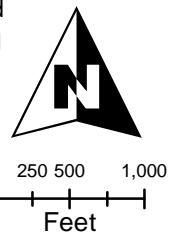
**Project Mapping**

Date: June 2020	Project No: E318201608	Appendix No: <b>C-5</b>
--------------------	---------------------------	----------------------------





- Study A
- Study B
- Study C
- Study D
- Study E
- Excluded Parcels
- Ephemeral Stream
- Perennial Stream
- PEM Wetland
- PFO Wetland
- PUB(x) Pond
- Upland Data Point
- Wetland Data Point



First Solar Ridgely

**Project Mapping**

Date: June 2020	Project No: E318201608	Appendix No: <b>C-6</b>
--------------------	---------------------------	----------------------------